

RM 300

BIBLIOTEKA  
MUZEUM w LANCUCE  
Nr 2813 Dział *Muz*



La voce della natura

Grati Boschi, amiche piante &c

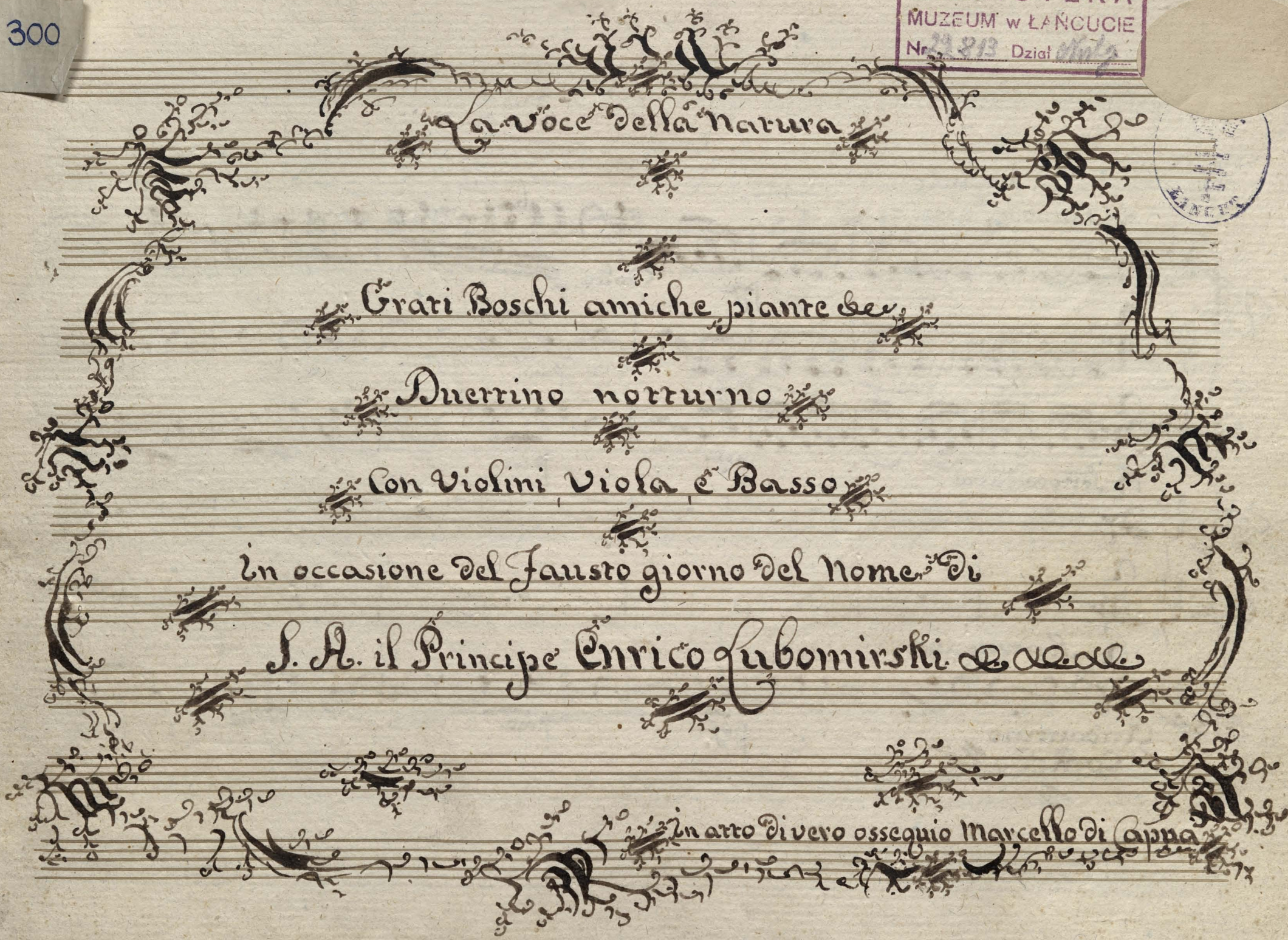
Querrino notturno

Con Violini, Viola e Basso

In occasione del fausto giorno del Nome di

S. A. il Principe Enrico Lubomirski &c &c &c

In atto di vero ossequio Marcello di Capua



*Con Sordini:*

*Sottovoce assai*

*Violin*  
*Violon*  
*Canto*  
*Canto*  
*Cello*

*Sottovoce assai*  
*Sottovoce assai.*

*Andantino*  
*Comodo*

*prof.* *dolce p.* *pmo.* *prof.* *pmo.* *prof.* *pmo.*

Detailed description: This is a page of handwritten musical notation. It features five staves. The top staff is for Violin, the second for Viola, and the bottom for Cello. The two middle staves are for vocal parts, both labeled 'Canto'. The music is written in a common time signature (C) and a key signature of one flat (B-flat). The tempo and performance instructions include 'Con Sordini', 'Sottovoce assai', 'Andantino', and 'Comodo'. Dynamic markings such as 'prof.' (piano forte) and 'pmo.' (piano molto) are used throughout. The notation includes various note values, rests, and phrasing slurs.